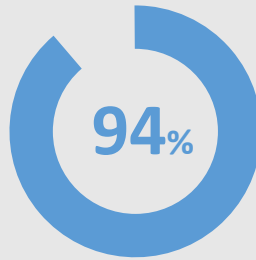




U.S. Department
of Transportation
**Federal Railroad
Administration**

Railroad Crossing Safety and Trespass Prevention

December 2016

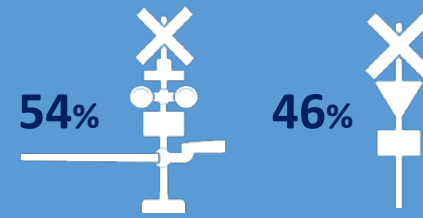


Combined, railroad crossing and trespasser deaths have accounted for approximately 94% of all rail-related deaths over the past ten years.

About every 3 hours, a person or vehicle is hit by a train



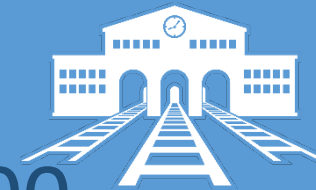
Crossings in the U.S.



Just over one half of all public crossings are **active** (include gates, bells, and/or flashing lights) while just under half are **passive** (include signs and markings, but do not include active warning devices). Always expect a train on any track at anytime.

The U.S. Railroad System

800
Railroads



144,000
Miles of track

212,000
Railroad crossings

Safety Trends

Overall rail incidents have been in decline...

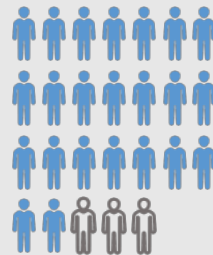
-37%

In the past 10 years fatalities at U.S. crossings have declined substantially.

-11%

Unfortunately, over the same 10 year period, trespassing fatalities have declined less.

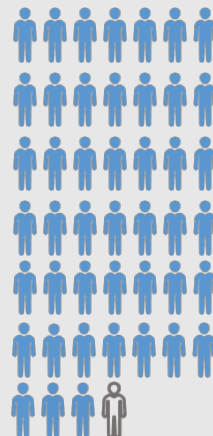
2015 saw Railroad Crossing fatalities decrease...



In 2015 there were approximately 230 fatalities at railroad crossings, a decrease of 30 from the previous year.

= 10 fatalities

However, trespasser fatalities decreased by less.



In 2015 there were approximately 455 trespasser fatalities at railroad tracks, a decrease of 10 from the previous year.



More than two-thirds of railroad crossing accidents occur in clear weather conditions

Trains cannot stop quickly! A train traveling at 55 MPH takes a mile or more to stop!



For more information on rail safety, visit our Statistics page under the Railroad Crossing Safety tab.